

WEST SHORE LAKE PONTCHARTRAIN STAKEHOLDER UPDATE

AUGUST 2024

L. Jeff Williams
Senior Project Manager, WSLP
New Orleans District
U.S. Army Corps of Engineers



U.S. ARMY



US Army Corps
of Engineers®



AGENDA

- Resiliency Study Schedule
- Construction Status and Photos/Videos
- Tentative Delivery Plan & Design Status

<https://www.mvn.usace.army.mil/About/Projects/West-Shore-Lake-Pontchartrain/>



RESILIENCY STUDY SCHEDULE

DATE	MILESTONE
February 27, 2023	Feasibility Cost Share Agreement (FCSA)
July 17, 2023	Alternatives Milestone Meeting (AMM)-120 days
December 5, 2025	Tentatively Selected Plan (TSP)
January 28, 2026	Release Draft Report and Draft EIS/EA for Concurrent Review
June 29, 2026	Agency Decision Milestone (ADM)
May 25, 2028	Chief's Report



CONSTRUCTION STATUS

- WSLP-110 contract was awarded on 21 Dec 22
 - 70% Scheduled; 85% Completed
- WSLP-107 contract was awarded on 15 Mar 23
 - 52% Scheduled; 52% Completed
- WSLP-101a contract was awarded on 28 April 23
 - 42% Scheduled; 40% Completed
- WSLP-108 contract was awarded on 25 August 23
 - 38% Scheduled; 35% Completed
- WSLP-104 contract was awarded on 25 August 23
 - 20% Scheduled; 19% Completed
- WSLP-106 contract was awarded on 9 September 23
 - 37% Scheduled; 37% Completed



CONSTRUCTION STATUS

- WSLP-102 contract was awarded on 14 September 23
 - 22% Scheduled; 21% Completed
- WSLP-105 contract was awarded on 22 September 23
 - 20% Scheduled; 20% Completed
- WSLP-103 contract was awarded on 21 May 24
 - Mobilizing within the next 30 days

- Pile Load Test Complete

CONSTRUCTION PHOTOS



US Army Corps
of Engineers®

WSLP-110 Construction Progress

CONSTRUCTION PHOTOS



WSLP-107 Construction



US Army Corps
of Engineers®

CONSTRUCTION PHOTOS



WSLP-106 Construction



US Army Corps
of Engineers®

CONSTRUCTION PHOTOS



WSLP-102 Construction



US Army Corps
of Engineers®

CONSTRUCTION PHOTOS



WSLP-108 Construction



US Army Corps
of Engineers®

U.S. ARMY



U.S. ARMY

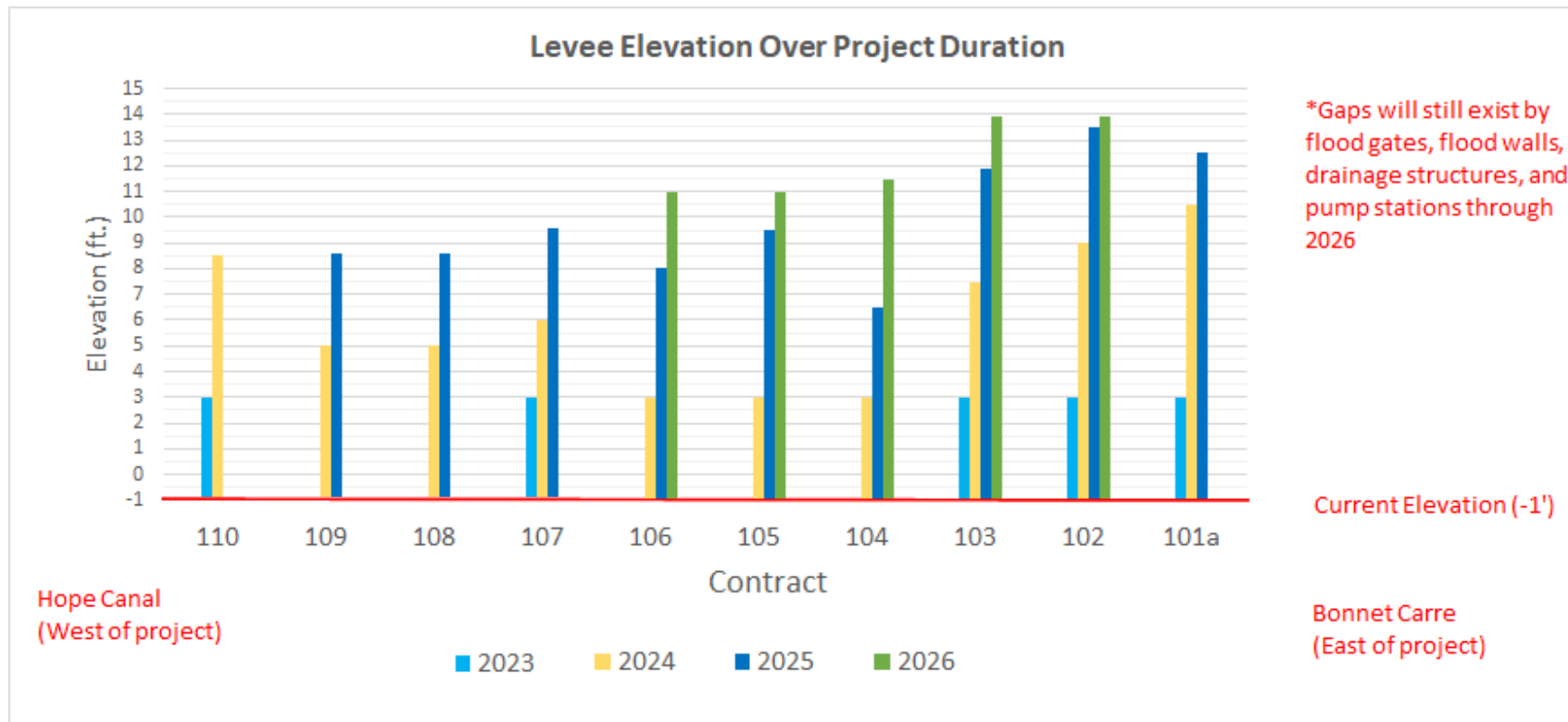


US Army Corps
of Engineers®

PRELIMINARY LEVEE CONSTRUCTION SCHEDULE

11

- Existing elevation approx. -1 feet
- 2023 and 2024: Construct 3-foot sand base and begin levee construction
- 2024: Levee built to heights around +6 feet
- 2025: Levee built to heights ranging +6.6 to +12.5 feet
- 2026: Levee built to full heights



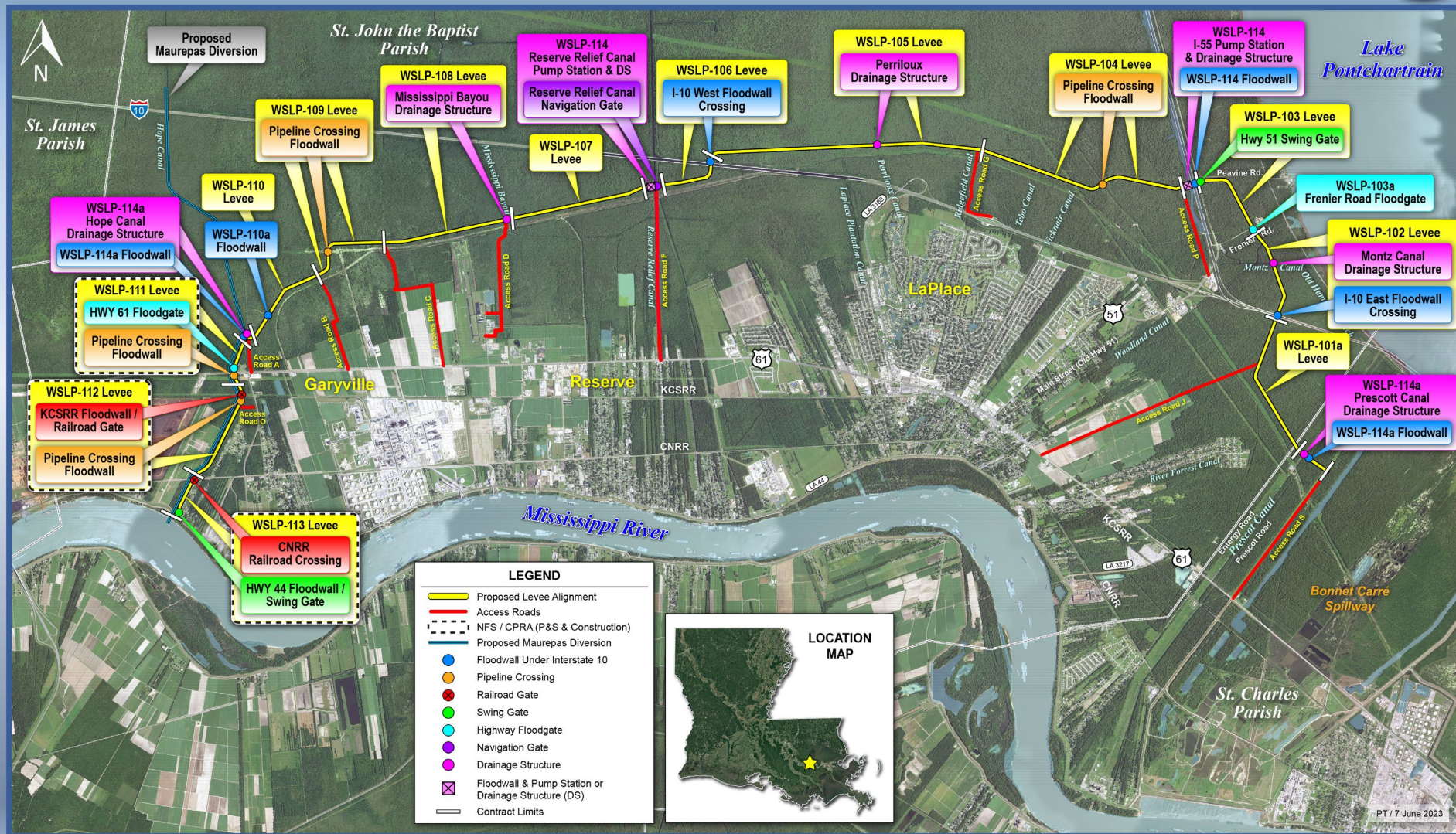
WEST SHORE LAKE PONTCHARTRAIN TENTATIVE DELIVERY PLAN

Contract ID	Description	Award
WSLP 103	Levee (approx. 1.0 mi.), Floodwall (approx. 500 ft)	21 May 2024 (awarded)
WSLP 109	Levee (approx. 1.0 mi), (approx. 500 ft), Utility Crossings	23 September 2024 (Advertised)
WSLP 111**	Levee (approx. 0.5 mi), Highway Ramp, Utility Crossings	
WSLP 112**	Levee (approx. 1.0 mi), Railroad Gate, Floodwall (approx. 500 ft), Utility Crossings	
WSLP 113**	Levee (approx. 0.5 mi), Floodwall (approx. 500 ft), Railroad Gate	
WSLP 114	Pump Stations (2 – 2,000 cfs)	15 June 2025
WSLP 114a	Hope and Prescott Drainage Structures	30 September 2024

**Designed and constructed by CPRA



West Shore Lake Pontchartrain



US Army Corps
of Engineers

U.S. ARMY



WSLP - St James Parish



US Army Corps
of Engineers

U.S. ARMY

Questions



US Army Corps
of Engineers®

U.S. ARMY